

SOUTH SHORE NO. 4 OF WELLINGTON

P.U.D.
IN PART OF SECTIONS 2, 3, 10 & 11, TWP. 44 S., RGE. 41 E.

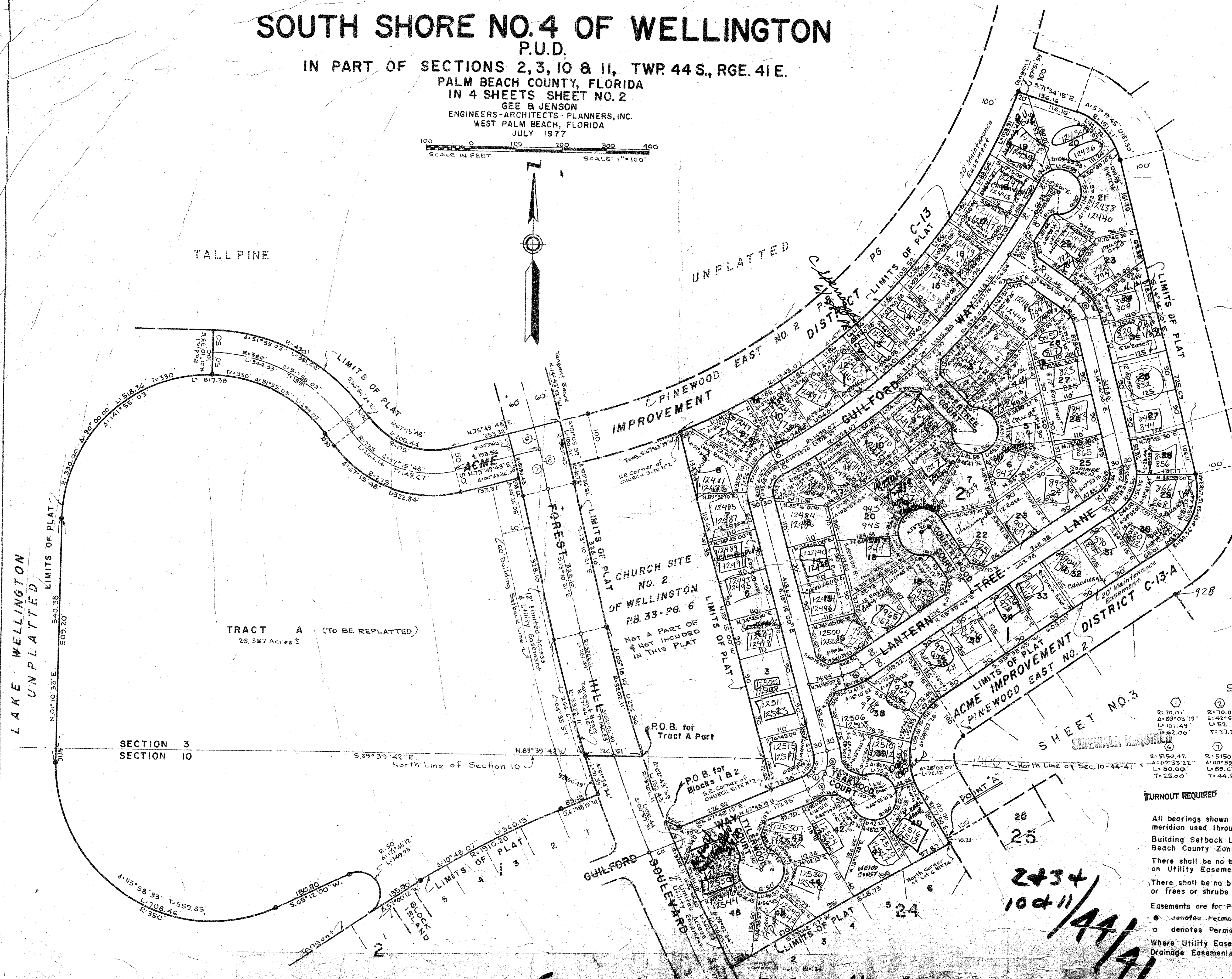
PALM BEACH COUNTY, FLORIDA
IN 4 SHEETS SHEET NO. 2
GEE & JENSON
ENGINEERS-ARCHITECTS-PLANNERS, INC.
WEST PALM BEACH, FLORIDA
JULY 1977

SCALE IN FEET
SCALE: 1"=100'



64

STATE OF FLORIDA
COUNTY OF PALM BEACH
This Plat was filed for record at _____ M.
this _____ day of _____ 1977,
and duly recorded in Plat-Book No. _____
on page _____
JOHN B. DUNKLE, Clerk Circuit Court
By _____, D.C.



PINEWOOD EAST NO. 2
OF WELLINGTON
P.B. 33 Pgs. 96-100, incl.

CURVE DATA

① R: 70.01' Δ: 83°03'19" L: 101.49' T: 22.00'	② R: 70.01' Δ: 42°57'19" L: 52.49' T: 27.55'	③ R: 70.01' Δ: 40°06'00" L: 49.00' T: 25.55'	④ R: 148.54' Δ: 19°06'15" L: 49.54' T: 25.00'	⑤ R: 70.01' Δ: 41°49'30" L: 51.58' T: 27.00'
⑥ R: 5150.41' Δ: 00°33'22" L: 50.00' T: 25.00'	⑦ R: 5150.41' Δ: 00°59'51" L: 89.67' T: 44.83'	⑧ R: 5150.41' Δ: 01°33'13" L: 139.66' T: 69.83'		

TURNOUT REQUIRED

NOTES

All bearings shown herein are relative to an assumed meridian used throughout Wellington.

Building Setback Lines shall be as required by Palm Beach County Zoning Regulations.

There shall be no buildings or other structures placed on Utility Easements.

There shall be no buildings or any kind of construction or trees or shrubs placed on Drainage Easements.

Easements are for Public Utilities, unless otherwise noted.

● denotes Permanent Reference Monument
○ denotes Permanent Control Point

Where Utility Easements and Drainage Easements cross, Drainage Easements shall take precedent.

0332-062

2434
10411
44/41

34
64

SOUTH SHORE NO. 4
P.B. 22 Pgs. 222-226, incl.